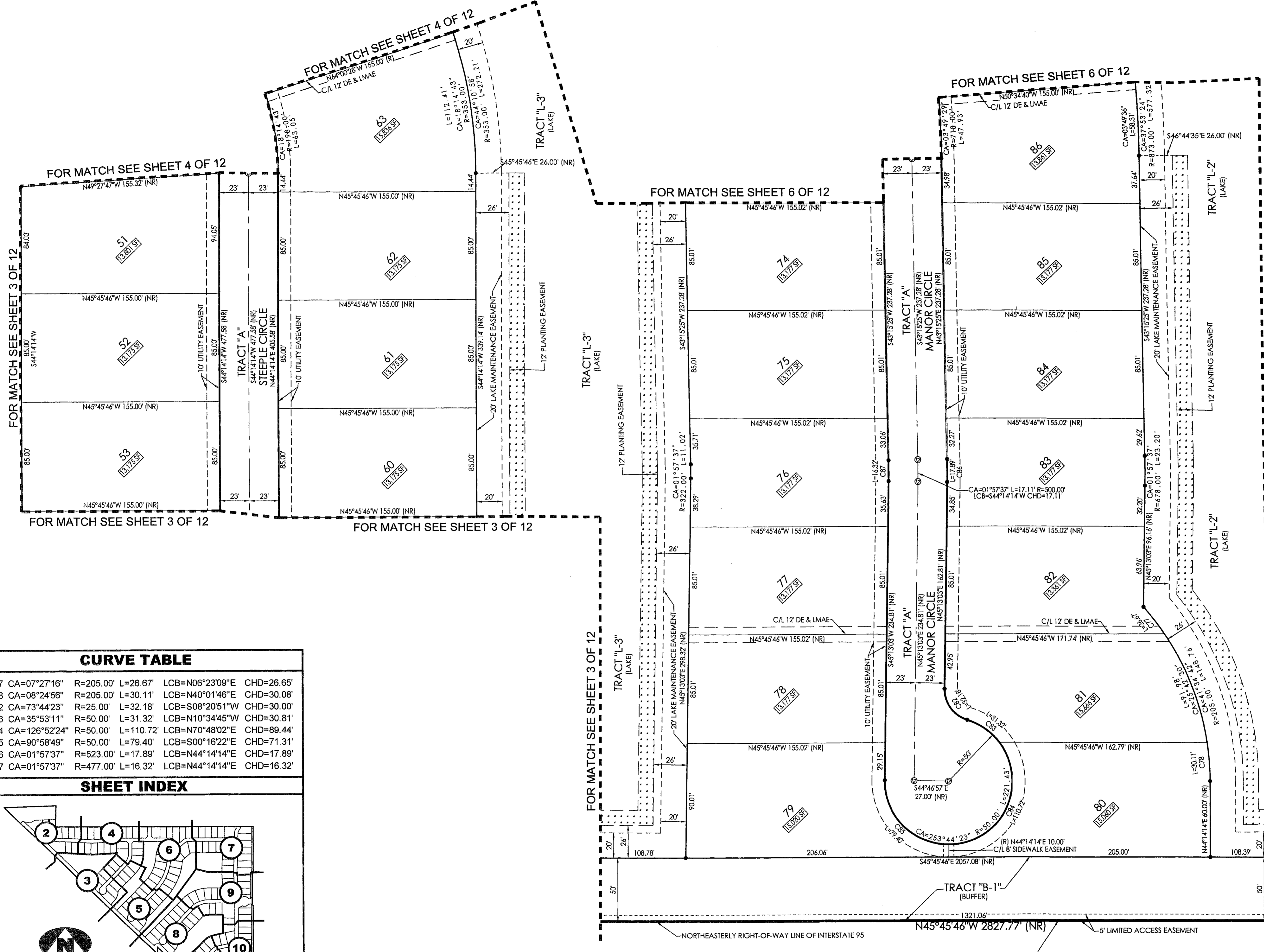
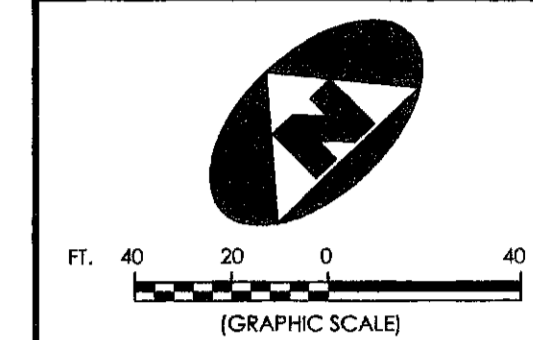


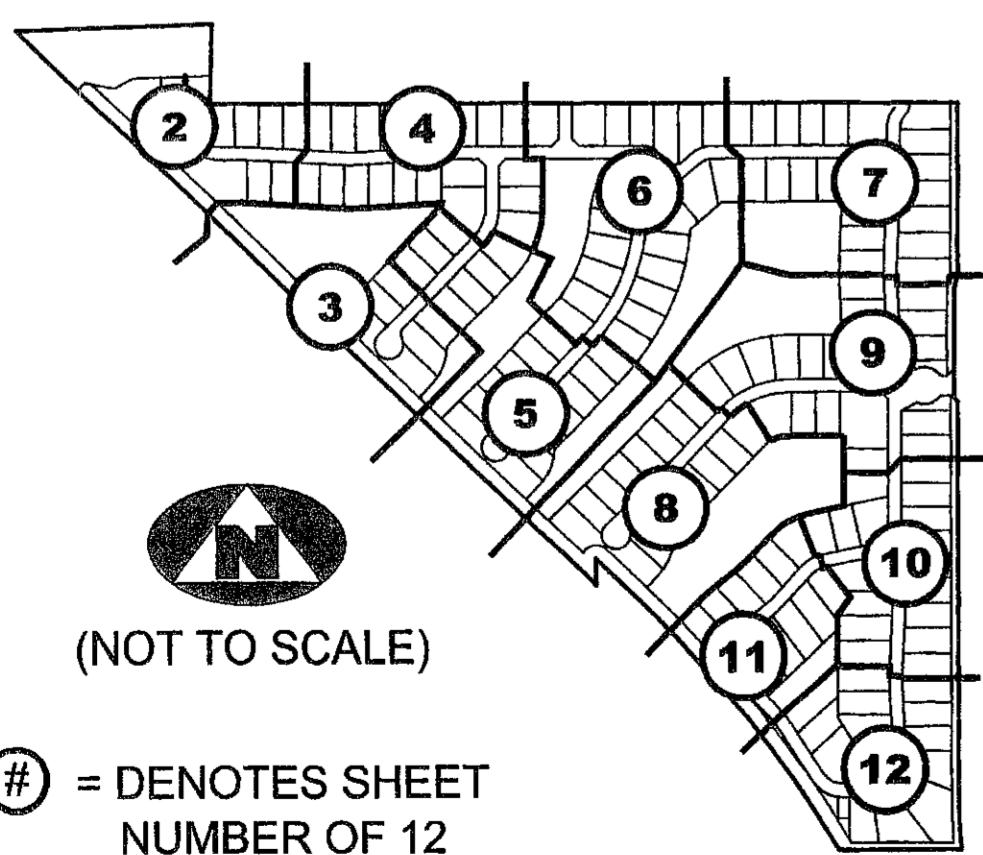
199



**CURVE TABLE**

C77	CA=07°27'16"	R=205.00'	L=26.67'	LCB=N06°23'09"E	CHD=26.65'
C78	CA=08°24'56"	R=205.00'	L=30.11'	LCB=N40°01'46"E	CHD=30.08'
C82	CA=73°44'23"	R=25.00'	L=32.18'	LCB=S08°20'51"W	CHD=30.00'
C83	CA=35°53'11"	R=50.00'	L=31.32'	LCB=N10°34'45"W	CHD=30.81'
C84	CA=126°52'24"	R=50.00'	L=110.72'	LCB=N70°48'02"E	CHD=89.44'
C85	CA=90°58'49"	R=50.00'	L=79.40'	LCB=S00°16'22"E	CHD=71.31'
C86	CA=01°57'37"	R=523.00'	L=17.89'	LCB=N44°14'14"E	CHD=17.89'
C87	CA=01°57'37"	R=477.00'	L=16.32'	LCB=N44°14'14"E	CHD=16.32'

**SHEET INDEX**



(NOT TO SCALE)

# = DENOTES SHEET NUMBER OF 12

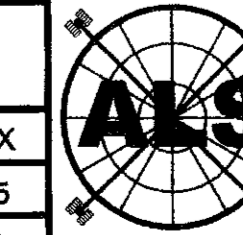
**LEGEND**

(R)	DENOTES A RADIAL LINE	R	DENOTES RADIUS DISTANCE	□	DENOTES A SET PERMANENT REFERENCE MONUMENT (L.B. 7344)
C/L	DENOTES A CENTERLINE	L	DENOTES ARC LENGTH DISTANCE	■	DENOTES A FOUND PERMANENT REFERENCE MONUMENT (L.B. 2171)
DE	DENOTES DRAINAGE EASEMENT	CA	DENOTES CENTRAL ANGLE	⊙	DENOTES A SET PERMANENT CONTROL POINT (L.B. 7344)
UE	DENOTES UTILITY EASEMENT	LCB	DENOTES LONG CHORD BEARING	⊙	DENOTES A NON RADIAL LINE
PG	DENOTES PAGE	CHD	DENOTES CHORD DISTANCE		
LMAE	DENOTES LAKE MAINTENANCE ACCESS EASEMENT	ORB	DENOTES OFFICIAL RECORDS BOOK		
F.D.O.T.	DENOTES FLORIDA DEPARTMENT OF TRANSPORTATION	P.B.CO.	DENOTES PALM BEACH COUNTY OFFICIAL RECORDS BOOK		

**SURVEYOR'S NOTES**

- THE BEARING BASE FOR THIS PLAT IS S 89°56'44"E AS SHOWN ALONG THE SOUTH BOUNDARIES OF THE PLAT OF JUPITER ISLES PLAT 2, AND JUPITER ISLES PLAT 3, RECORDED IN PLAT BOOK 102, PAGE 183 AND PLAT BOOK 102, PAGE 188, RESPECTIVELY.
- IN THOSE INSTANCES WHERE UTILITY OR DRAINAGE STRUCTURES ARE CONSTRUCTED IN CONFLICT WITH THE PLATTED PERMANENT CONTROL POINT POSITION STRADDLERS MONUMENTED AS PERMANENT CONTROL POINTS WILL BE SET TO REFERENCE THE PLATTED POSITION.
- THIS INSTRUMENT WAS PREPARED BY WM. R. VAN CAMPEN, P.S.M. NO. 2424, IN AND FOR THE OFFICES OF ASSOCIATED LAND SURVEYOR'S, INC., 4152 WEST BLUE HERON BOULEVARD, SUITE 121, RIVIERA BEACH, FLORIDA, 33407

FILE: P256LOXPLAT	
FB:	WO.NO.: P256LOX
SCALE: 1"=40'	DATE: 2/27/2005
DWN: KVC	SHEET 5 OF 12



**ASSOCIATED LAND SURVEYORS, INC.**  
 4152 W. BLUE HERON BOULEVARD-SUITE 121  
 RIVIERA BEACH FLORIDA 33404  
 PHONE: (561) 848-2102 FAX: (561) 844-9659  
 EMAIL: ALSSURVEY@AOL.COM